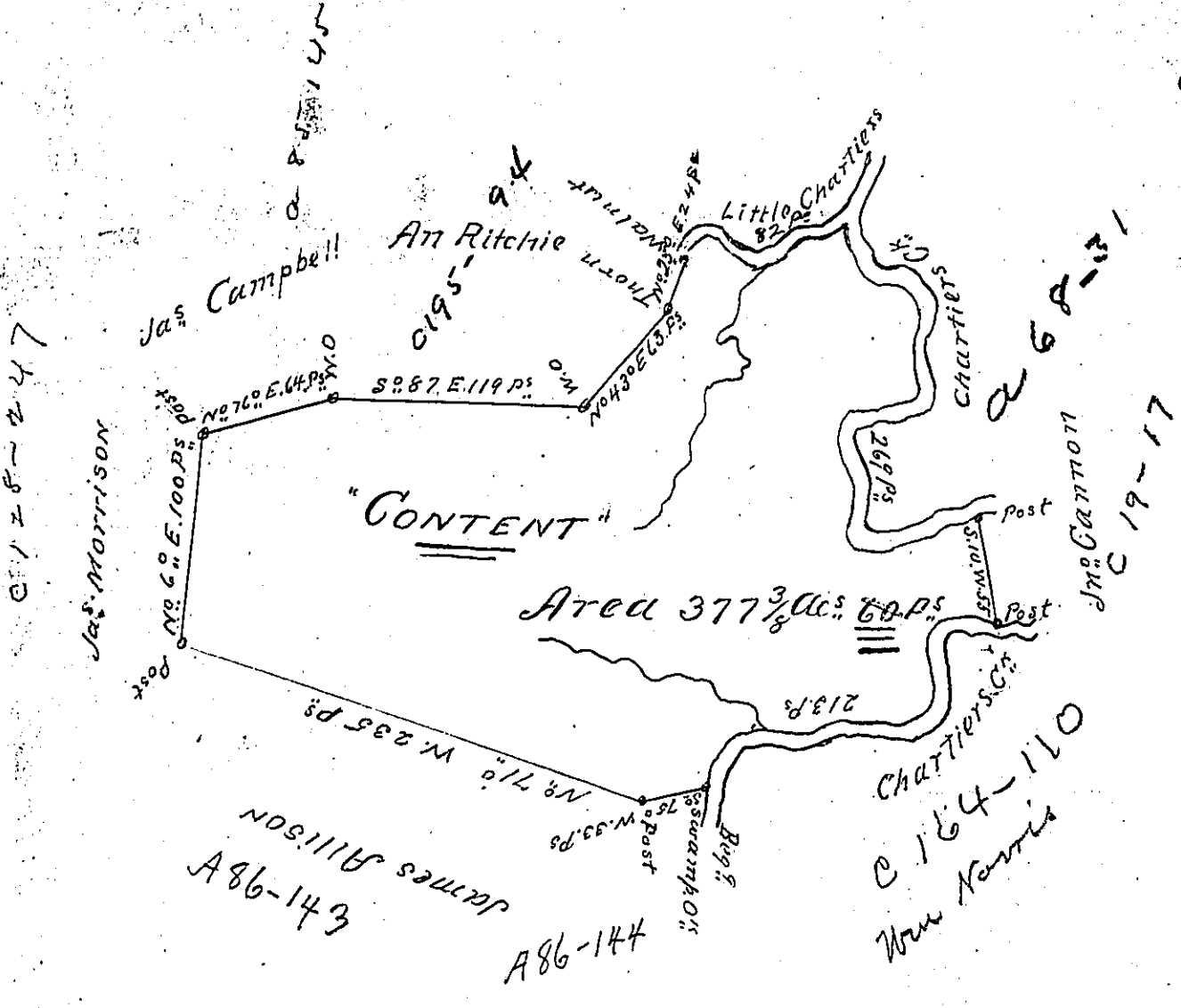


COURSES down little  
Chartiers Bay at the Walnut



No 38° E 20 Ps  
 So 50° E 20 Ps  
 So 70° E 16 Ps  
 No 60° E 8 Ps  
 So 87° E 18 Ps  
 82 to 7th Junction  
 Thence up Chartiers Cr  
 So 35° E 29 Ps  
 So 58° E 20 Ps  
 So 20° E 20 Ps  
 So 29° W 15 Ps  
 So 27° E 16 Ps  
 So 60° W 8 Ps  
 So 77° W 34 Ps  
 So 30° E 22 Ps  
 So 75° W 31 Ps to a Post  
 No 75° W 26 Ps  
 Thence within Cannon's  
 Line to another Post thence  
 up 4th Cr  
 No 77° W 30 Ps  
 So 5° W 36 Ps  
 So 20° E 14 Ps  
 So 23° W 20 Ps  
 No 76° W 36 Ps  
 So 60° W 14 Ps  
 No 77° W 20 Ps  
 So 75° W 25 Ps  
 So 23° W 18 Ps to 1st Beg?  
 213  
 at 1st Swamp Cr

A Draught of a Survey called "Content" situate on  
 Chartiers Co. in Washington County contg. 377 ac. 60 Ps  
 and the usual allow<sup>ce</sup> for Highways &c. executed June y<sup>e</sup>  
 7<sup>th</sup> 1786 in Pursuance of a Warrant for 400 ac. granted to Jos.  
 Brown one of the Exec<sup>rs</sup> of y<sup>e</sup> Estate of Mich<sup>l</sup>. Rawlings dec<sup>d</sup>  
 (in Trust for the Heirs of s<sup>t</sup>. Mich<sup>l</sup>. Rawlings) dated y<sup>e</sup> 5<sup>th</sup> day  
 of Apl<sup>l</sup> 1786 =

Jos. Lukens Esq. Sur. Genl.  
 Presley Nevill } J.D.  
 Matthew Ritchie }

IN TESTIMONY that the above is a copy of the original remaining on file in  
 the Department of Internal Affairs of Pennsylvania, made  
 conformably to an Act of Assembly approved the 16th day of  
 February, 1833, I have hereunto set my Hand and caused  
 the Seal of said Department to be affixed at Harrisburg,  
 this sixth day of October 1903

*George B. Brown*  
 Secretary of Internal Affairs.